





Naturally effective extraction

How to effectively ventilate the wet rooms by integrating the requirements and specific needs of passive stack ventilation? The GHN humidity sensitive extract grille is the perfect solution as it adapts its airflow to variations in the relative humidity rate. Its dimensions are compatible with the opening of the passive stack ventilation ducts and its design allows for perfect integration in bathroom and toilets.

Special features for passive stack ventilation

Humidity sensitive system: modulates the airflow according to the local relative humidity rate.

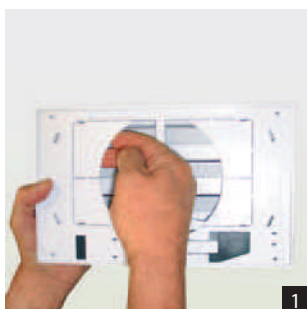
Easy to maintain: no adjustment, simple yearly dusting.

Adapted to all situations (1)

Four removable plates located at the back of the GHN make it adaptable to various dimensions and hole configurations when installed in bracket version. It is also possible to increase the maximum airflow up to 100 m³/h under 10 Pa.

Simple mechanism for greater longevity (2)

The GHN, as per the Aereco style, is equipped with a humidity sensor of simple and robust design, requiring no maintenance and preserving all its qualities for many years.



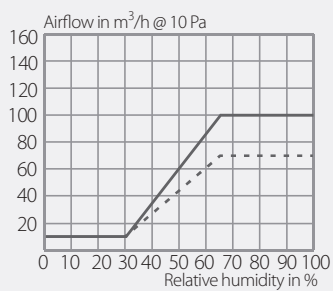


GHN

Extract grille		GHN spigot	GHN bracket	GFN spigot	GFN bracket
Standard code		GHN736	GHN735	GFN850	GFN849
Airflow characteristics					
Humidity sensitive		■	■	-	-
Airflow (min - max) @ 10 Pa	m ³ /h	15-75	15-75	100	100
Max. possible airflow (by removing the 4 back plates) @ 10 Pa	m ³ /h	-	100	-	-
Acoustics					
Acoustic power Lw @ Max. airflow @ 10 Pa	dB(A)	non significant			
Power supply					
Fully automatic (no electricity needed)		■	■	■	■
Characteristics					
Weight	g	315	270	238	174
Colour		white	white	white	white
Material		PS	PS	PS	PS
Installation					
Duct compatibility	mm	ø125	mini. 125x105	ø125	mini. 125x105
Bathroom destination		■	■	■	■
Bathroom with toilets destination		■	■	■	■
Toilets destination		■	■	■	■
Kitchen destination		■	■	■	■

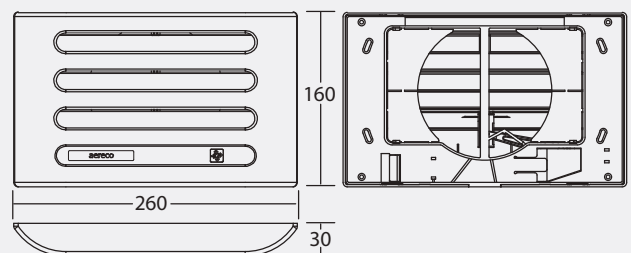
■ : standard □ : optional

Airflow characteristics

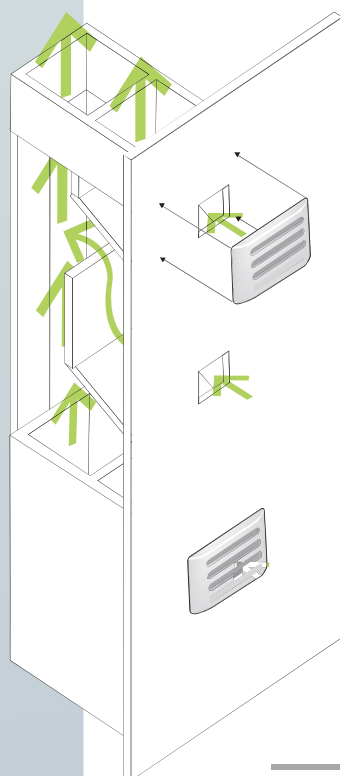
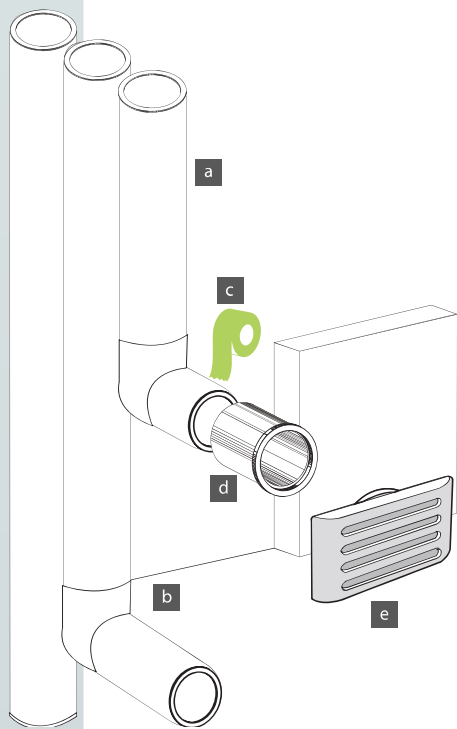


--- GHN 15-75 (basic setting)
 — GHN 15-75 (back plates removed)

Dimensions in mm



GHN - bracket version



Passive stack ventilation with individual ducts in a collective building:

Passive stack ventilation with individual ducts in a collective building: All connections have to be carried out using adhesive tape (c) or speed clamps. Rigid ducts have to be fixed to the structure of the building by means of brackets.

1 Fix the sleeve (d) in the wall.

2 Fix the extract grille (e) on its sleeve (d).

2 types of extract grille connections are possible:

- spigot to be directly encased in the sleeve
- without spigot to be fixed to the wall with the duct or the sleeve.

3 Install the vertical rigid ducts (a) in the space dedicated for this purpose. Vertical ducts have to be provided at the top with an adapted outlet, which allows for reaching the required airflow. Each duct serves a floor.

4 Connect a rigid 90° bend (b) to the base of each vertical duct, at each floor. Please note that the extract grilles can also be positioned on the ceiling, directly connected to the vertical ducts.

5 Realise the connection sleeve-bend using adhesive tape (c). Repeat stages 1 and 2 for each extract grille.

Scheme legend

- a. rigid duct b. rigid 90° bend c. adhesive tape d. sleeve
e. extract grille

Passive stack ventilation with collective ducts in collective dwelling:

Grilles serving the same room on each floor are connected to the same main duct, but first connected to an individual secondary duct, one floor high.

Maintenance

	Action	Frequency
Air inlets	Remove the dust with a dry cloth	Once per year
Canopies	Remove the anti-insect grille and clean it in soapy water	Once per year
PSV extract grilles	Wipe the surface of the shutters with a damp cloth	Kitchen : twice per year Bathroom and WC : Once per year